



pearson
ferrier®



22 SCHOLARS WAY
Bury, BL9 6DN
£114,950

22 SCHOLARS WAY

Property at a glance

- GROUND FLOOR APARTMENT
- TWO DOUBLE BEDROOMS
- MAIN BEDROOM ENSUITE
- NO ONWARD CHAIN
- IDEAL FIRST TIME BUY OR ONE LEVEL LIVING
- CLOSE TO BURY TOWN CENTRE

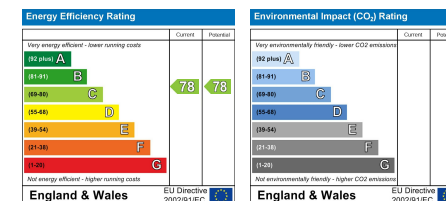
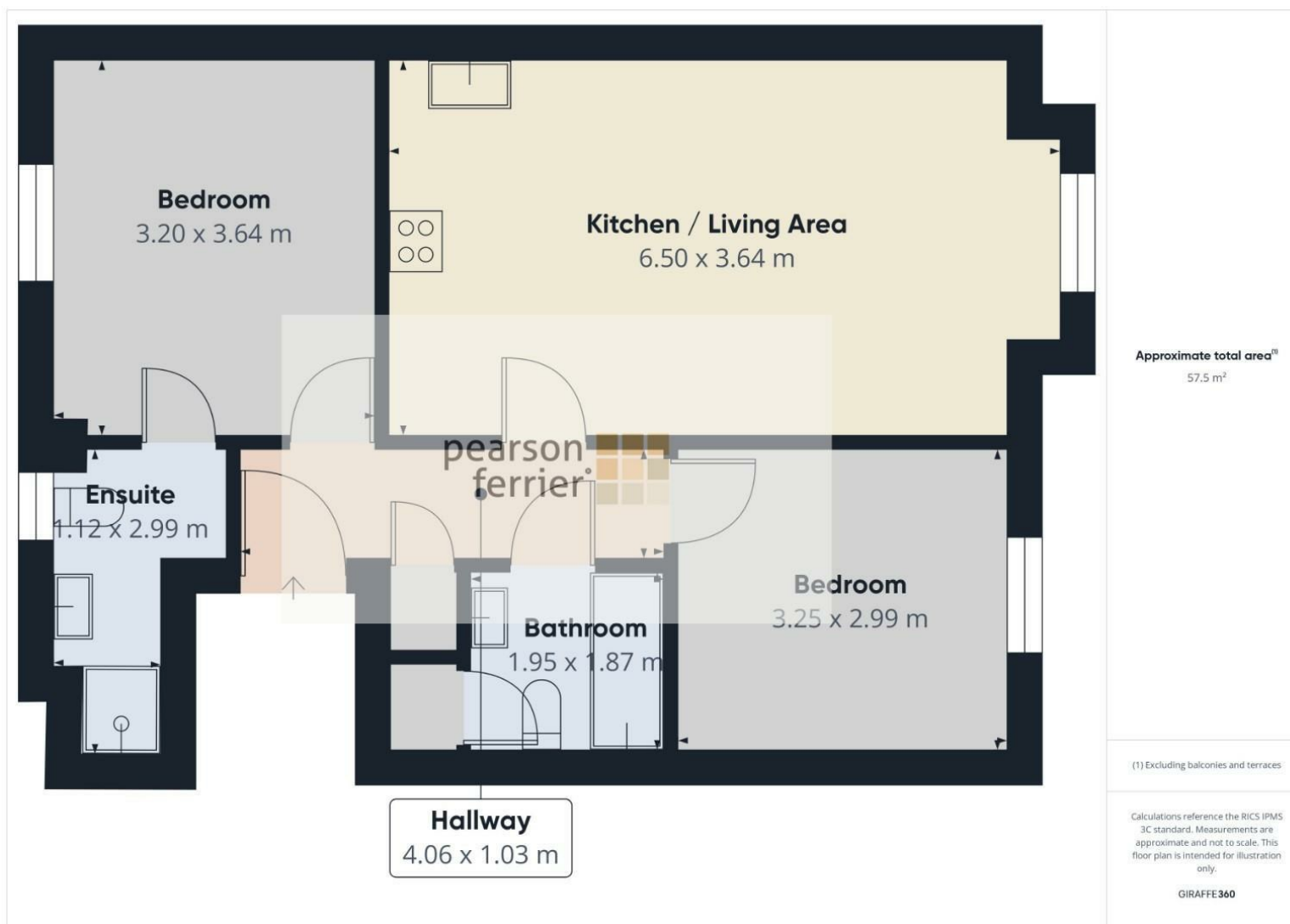
A ground floor apartment with two double bedrooms with main bedroom being en suite. We have received an offer of £105,000. Any increased offers are to be received within 5 days of this publication at the above agents.

The apartment is located in the Chesham area of Bury offering good access to the M66 motorway and is within walking distance to Bury town centre. There are a good range of local amenities including shops, schools, Chesham Woods, Clarence Park and Bury Lido. Internally the apartment comprises of Entrance hall open plan lounge/kitchen/diner two double bedrooms (main bedroom en suite) and family bathroom. The property offers low maintenance living and provides a good opportunity for those needing one level living, first time buyers or buy to let landlords. The property is both gas central heated and double glazed and is offered with no onward chain.

Tenure - Leasehold 999 years from 1st January 2005
Ground Rent - £175
Service Charge - £366 per quarter
Council Tax - Band B
EPC - C







Bury Office
435/7 Walmersley Road, Bury, Lancashire, BL9 5EU
Telephone: 0161 764 4440
Fax: #
Email: bury@pearsonferrier.co.uk

www.pearsonferrier.co.uk



All statements contained in these particulars are for indicative purposes only and are made without responsibility on the part of Pearson Ferrier and the vendors of this property and are not to be relied on as statements or representations of fact. Potential purchasers should satisfy themselves by inspection or otherwise as to the accuracy of such details contained in these particulars.